

# Faith United Lutheran Parish

# NOTEWORTHY NEWS

APRIL/MAY 2015

## Message from Pastor Roy

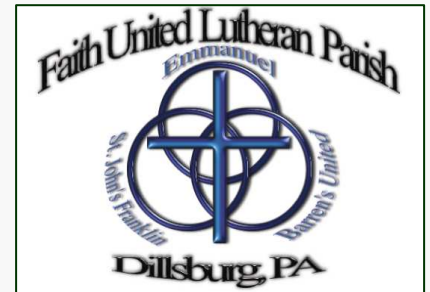
For Jesus and his disciples, Holy Week and Easter Sunday bring radical shifts in outlook and hope. The challenge of living with uncertainty and disappointment alongside relief and joy—these are as much a part of our lives as they were with theirs. Weaving the strands of trust into these life experiences produces the fabric of faith. This God who gives new life. Who invites us to trust. . .more than we understand? Whose workshop is the details and interests of our lives? Not theoretical knowledge, but deeply felt and held realities teach us to wait, and listen, and learn the ways of the Spirit. To have a growing edge of faith in Life. Faith that loss, change, and death are not the final word in our lives. But, instead, Presence, Overcoming, Salvation, Redemption, Rest, and Peace. These lessons in life and hope are echoed in the visible signs of Spring all around us.

The disciples' early faith, despite Jesus' teachings, was that Jesus could take away their fears and accomplish their goals—personal as well as national. Faith for them began with sticking with the one who had the power to do this. They were sticking with

a “winner” so they too could win. . .and then he lost. Death was a major loss from their perspective. Not to mention the danger. If the establishment went after Jesus, would it not also come after the disciples? There was Good Friday after Jesus death and the long Holy Saturday into Sunday morning.

Then—suddenly, on Sunday morning--they have these experiences that suggest that he is still with them. His ministry, healing, teaching, and loving presence is going on all around them--even *in and through* them! The Spirit of Christ is within them. Their faith transforms. They learn that only when they lose can they win. Only when they release themselves over, fully, to God and faith's justice, mercy, and peace—do they fully experience life. They live with Christ. They no longer fear death. They are learning to live in faith. This learning is in their experience. It's a body knowledge, not a head knowledge, born out of their lives.

So this challenge is ours as well. In the losses, disappointments, illnesses, and frustrations of our lives and parish, we learn the mysterious ways of faith in the One who turns death into life and hope. The One who



## INSIDE THIS ISSUE:

Pastor Roy's Message	1
Parish News (Old)	2 - 3
Parish News (New)	4 - 10
Thank-You's	11
Financial Information	11
Council Minutes	12-14
April/May Birthdays	15
April/May Worship Participants	16-17
April/May Calendars of Events	18-19
Parish Information	20

sees beyond death to the unifying truth of God's creative, life-giving mercy which is always here and can never be lost. Christ is alive and draws us from our false assumptions to a rest which is forever bound in the unity we share with all of creation and one another--infused with God's mercy. Thanks be to God!

Pastor Roy



# REAFFIRMATION OF WEDDING VOWS CEREMONY - FEB. 14, 2015



## SHROVE TUESDAY PANCAKE DINNER - FEB. 17, 2015

The aroma of frying bacon and sausage permeated in the smoke-filled church house Feb 17 as we all enjoyed our Shrove pancake dinner. Mmmmmmmmm...yummy pancakes! There were many in attendance (one of the few times in February we didn't have snowfall to hinder traveling); and we collected \$182.25 towards **ELCA World Hunger**, which is the organization we chose to support during the Lenten season. Thanks to everyone who donated food items, our many kitchen helpers, cooks, and cleanup crew. We couldn't do this without your unwavering help.



## MOVIE NIGHT

With extremely cold temperatures and snow this winter, the decision was made to cancel Movie Night at Emmanuel until warmer weather. It looks like **May** could be the next movie night, but Wally/Ron will keep us informed as to when they will pick back up with movie night the first Friday evening of the month .



## REMINDER TO CONTINUE TO TITHE

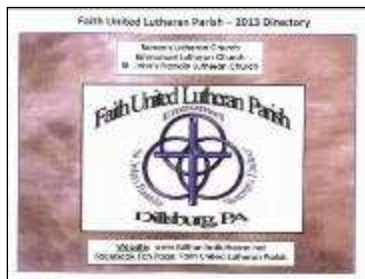


This winter's snowstorms, ice, and extreme cold spells had many members unable to attend worship. With services being cancelled and unsafe travel conditions, the winter weather months have taken a toll on our churches budgets. As a reminder, **don't forget to continue to tithe...including for Sundays you are not able to attend.** Whether your absence is due to bad weather, vacation, illness, work, being homebound, or snowbirds, the continuation of our ministries depends on our members faithfully giving as they are

able. Checks can always be mailed to the church, and members who miss a Sunday or two can turn in all missed-weeks envelopes upon their return to worship or give a lump-sum check. Let's work toward getting our budgets back on track after a rough winter start to the new year.

--Your Parish Council

## PARISH DIRECTORY CHANGES



Please let Deb Racer know of any changes to our directory so they can be listed in our issues of the "Noteworthy News" newsletters. Deb can be contacted at the parish office (432-4802) or by email ([secretaryfulp@gmail.com](mailto:secretaryfulp@gmail.com)).

- Evelyn Diller - Passed away **January 27, 2015**
- Florence Kitner - Passed away **March 14, 2015**
- Doris & Jack McCauslin - New address/phone is: **270 Runaway Road, Abbottstown, PA 17301; 717-856-9845**

## RELEASED TIME BIBLE PROGRAM - HELP NEEDED

Are you looking for a weekly opportunity to invest into the next generation? Have you considered helping with the Released Time Bible Program? Joy El Generation provides training and equipping to help you ignite a generation that seeks God. Come and join us as we focus on the children and teens in your community! We have openings for those who would like to serve Tuesday afternoons with the students from **Dillsburg or Northern Elementary**. There are also spots on Thursday from 11:30 to 1:30 in **Wellsville**. For more details, please call Lisa Doyle at **717-764-1071**.



**HOLY WEEK SERVICES**

**MAUNDY THURSDAY SERVICE**

**April 2** – Barren's at 7:00PM  
 Service of Holy Communion  
 Led by Pastor Debbie

**GOOD FRIDAY SERVICE**

**April 3** - Emmanuel at 7:00PM  
 Led by Pastor Roy

**SATURDAY EASTER VIGIL SERVICE**

**April 4** - CLC Filey's at 7:00PM  
 Service of Holy Communion  
 Led by Pastor Debbie and Pastor Roy presiding

**FULP "FESTIVAL OF THE RESURRECTION"  
 (EASTER SUNDAY) WORSHIP** – April 5

- St. John's Sunrise Service with Holy Communion – 7:00AM; Pastor Roy
- Emmanuel Service with Holy Communion - 9:00AM; Pastor Roy
- Barren's Service with Holy Communion - 10:30AM; Pastor Roy

**Worship with us this Easter!**



**SATURDAY APRIL 4 - 11:00AM @ CLC, FILEY'S**

**EASTER  
 EGG HUNT!**



All are welcome. This is a community event. Invite friends, relatives and neighbors.

For Nursery age to Grade 5. We will be meeting at Filey's church main entrance. The Egg hunt will be held rain or shine. We will be using Hard Boiled Eggs and Filled Plastic Eggs. **If you would like to donate eggs bring them to the church entrance on Saturday, April 4.** Someone will be there around 9:00 a.m.

If you have any questions, give a call to Sandy Books at 432-3407, see Janet Davis at the Nursery School, call 432-3023, or call the church phone at 432-4878.

## FINE ARTS AT FIRST BENEFIT CONCERT - APRIL 12

The **Dickinson College Collegium and Orchestra** will perform a **Benefit Concert for Safe Harbour** on Sunday, **April 12** at 4:00PM at First Lutheran Church, 21 South Bedford Street, Carlisle. The Collegium will sing musical settings of texts from Virgil's Aeneid, and the Orchestra will perform works by Bartok, Vaughan Williams, and Bach. Also featured will be Mahler's Adagietto from Symphony No. 5 under the baton of guest conductor Cheung Chau, director of orchestral studies at Utah Valley University and music director of Sinfonietta Polonia in Poland. Sponsored by Fine Arts at First, admission to the concert is free. A freewill offering will be received to benefit the work of Carlisle's Safe Harbour whose mission is to provide shelter for the homeless. First Lutheran Church is handicapped accessible. For more information, call the church, 717-249-3310, or visit [www.firstlutherancarlisle.org](http://www.firstlutherancarlisle.org).

## SUMMER CHURCH CAMP

Pick up your Camping Brochure located on the back table at each church! Registrations can be done online at [LutheranCamping.org](http://LutheranCamping.org) or you can fill out the form in the booklet and mail it in with your payment.

- 2015 Camp Open House is Sunday, **April 12** from 2:00-4:30 pm.
- Each camper will receive a \$10.00 discount for Jenn Kreider signing up as our parish camp person. Special thanks to Jenn Kreider.
- The Parish also pays 100% of the 1st camp chosen by member campers and 50% of subsequent camps.
- Other camping discounts: Receive a \$15.00 discount for registering and paying in full before **April 4**.
- As a bonus, a \$10 gift certificate will be given for the camp store to every brand new camper!



## PARISH BLOOD DRIVE APRIL 13, 2015

We are having our annual Spring Central Pennsylvania Blood Bank drive **April 13** from **1:00-7:00PM** in the Church House. Any questions, please contact Jan Keslar .



### Community Blood Drive

### Faith United Lutheran Parish

Held at-  
**Barren's United Lutheran Church**  
232 Kralltown Road, Dillsburg  
In the Fellowship Hall

## Monday, April 13<sup>th</sup>

## 1:00 pm - 7:00 pm

Contact Jan Keslar at 292-2295 or  
Linda Gochenauer at 432-2115.  
Hot food provided for everyone  
who attempts to donate.  
**Walk-ins Welcome!**



Your Community Blood Bank



For more information contact: 1-800-771-0059 ~ [www.cpbpb.org](http://www.cpbpb.org)

## MUGS-N-MUFFINS



8:00AM Mugs-N-Muffins schedule for the next 3 months:

- April 18 at Barren's
- May 16 at Emmanuel
- June 20 at Barren's



**MEN'S  
BREAKFAST**

8:00AM Men's Breakfast (at Baker's Restaurant in Dillsburg) schedule for the next 3 months:

- April 18
- May 16
- June 20

**LUTHERAN YOUTH DAY  
(GRADES 6 - 12)  
APRIL 18, 2015**



Lutheran Youth Day will be held at Susquehanna University from 10AM-5:30PM on April 18. The theme this year is Redeemed. The Cost is \$10 and includes group gatherings, high-energy music, skits, worship, lunch and a concert by "Sven and Dean". Register and order a \$12 t-shirt by April 8; call (570) 372-4303.

**WALK FOR HOPE  
APRIL 19, 2015**



Help fight hunger and poverty in our community by walking for our neighbors in need! Walk with us in Dillsburg, Dover, or Mechanicsburg West Shore!

Sunday, **April 19**  
Registration: 1:30 pm  
Walk Begins: 2:00 pm

**THRIVENT  
CHOICE**



Just a reminder that any Thrivent Choice Dollars that your accounts may produce need to be assigned to an organization by you on a regular basis. If not, they will expire. Previously, you could designate your church organization and they would automatically be sent. Now, you need to personally get to your account and assign them on a quarterly, semi-annually, or annual basis or the choice expires and the dollars are lost. So, if you would like the church to receive a few extra dollars, you need to do a little extra work!

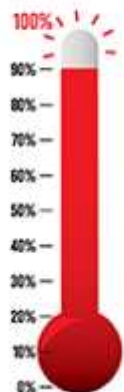
World Malaria Day is **April 25**, offering us an opportunity to do something significant for the ELCA Malaria Campaign. Five years ago we started this campaign, dreamed big with our Lutheran companion churches and partners, and set out to raise \$15 million by 2015 for programs to fight malaria. The time to make this dream a reality is now.

Together, we have already raised more than 90 percent of our goal. We are looking to you and members of this church to help the ELCA Malaria Campaign reach the \$15 million mark.

Thanks to the faithful support of people like you, the ELCA Malaria Campaign is currently at work with Lutheran companion churches and partners in 13 African countries. We have had great success, but we're not done yet. We need your support to reach our goal and ensure all of the malaria programs will be fully funded.

**WORLD MALARIA DAY  
APRIL 25**

**WE ARE  
ALMOST  
THERE!**



**WE HAVE ALREADY  
RAISED OVER 90%  
OF OUR GOAL -  
LET'S GET TO 100!**

- **More than 2 million** educated about malaria
- **Nearly 50,000** bed nets distributed
- **More than 10,000** trained on malaria prevention and treatment

**SPRING MUSIC FEST**  
**APRIL 25, 2015**  
**7:00PM @ Emmanuel**  
**Gospel Music At It's Finest!!**



Featured musicians and vocalists:

- Solid Rock**
- High Praise**
- The Faithful Men**
- Tara Haller**
- The McCurdy Sisters**
- The Good News**

This is our 24<sup>th</sup> Music Fest, and all have been a fundraiser for New Hope Ministries. Please plan to attend to hear a fine mix of Gospel and Christian music. There is NO admission, however, a free-will offering will be accepted, with ALL proceeds benefitting New Hope Ministries. Light refreshments/ reception will follow the musical event. Questions, contact Wally Foreman, 432-9284.

**SPAGHETTI SUPPER**  
**APRIL 26, 2015**



We will be having a Spaghetti supper in the Church House to Benefit Habitat for Humanity, **April 26** from 5:00-7:00PM. Questions, contact Ellen Hampton.

**PARISH MEETING/POT LUCK MEAL**



The parish will be scheduling a **1:15PM meeting** after a **Sunday pot luck meal** either on **May 17th or 31st** [depending on the availability of Richard

Jorgensen (from the Bishop's office)] so that we may listen to one another on the impact of our financial challenges on our future. We will pass it along when the date is finalized.



**REMAINING 2015**  
**OUTREACH MEETINGS**

All at 7:00pm at Barren's:

- May 18**
- July 20**
- September 21**
- November 16**



The following dates are tentatively scheduled for upcoming combined/parish services in 2015:

- **May 24** (Memorial Day) at Emmanuel
- **August 2** (Parish service and picnic ) at Latimore Twp. Park
- **September 6** (Labor Day) at Barren's
- **October 18** (Heritage Day) at St. John's
- **December 27** (Lessons and Carols) at CLC Filey's

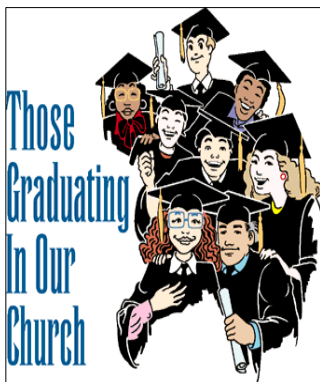




**SUNDAY EVENING WORSHIP**

Come to Sunday evening worship at a **NEW** location and experience a **NEW** way to worship. We are joining other area Lutheran churches at the Square Bean Coffee Shop in Dillsburg. Bring your hearts and mugs to **“Table Talk” (Coffee Christ Community)** for a Communion Worship Service at **5:00PM.**

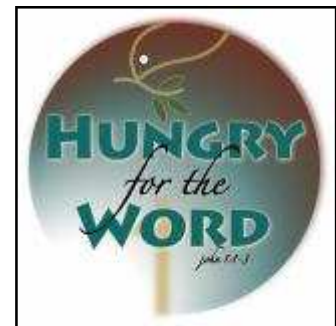
**GRADUATION RECOGNITION**



Also, please email Deb (secretaryfulp@gmail.com) a photo of the student for our newsletter and recognition insert.

Do you know someone in our Parish who is **graduating** from high school, college, or technical school? If so, please let Pastor Roy know as soon as possible by calling the office 432-4802. Leave the following information on the answering machine if Deb or Pastor Roy are not in the office when you call: Student’s Full name, School graduating from, plans upon graduating, and member of which church. We would like to honor our graduates sometime in June. Date TBD.

**SYNOD ASSEMBLY**



Save the date...the 28th annual assembly will be **Friday, June 5 - Sunday, June 7.** It will be held at Messiah College in Grantham, PA. Early bird registration ends April 15, and final registration closes April 30. Avoid the extra charge for onsite registration by completing your registration now.

**DOUBLE CREEK BIKE TOUR - REST STOP AT BARREN’S**  
**JUNE 20, 2015**

We will again be hosting the first rest stop along the 40-mile “Double Creek Tour,” cycling event sponsored by the York Health Foundation for the “Healthy Community Pharmacy” which provides medicine and medical supplies to underinsured individuals in York and Adam's counties. More information as we get closer to this event.



**CODORUS STATE  
PARK - PARISH  
CAMPING  
WEEKEND**

This year we will be trying something new with our Group Camping. We will be going to **Codorus State Park** near Hanover. Everyone will make their own campsite reservation. We will be using Loop C in the area of Numbers 110, 112, 114 for trailers/pop-ups and Number 130 for tents. Bathrooms/showers are close. Dates for camping are **Friday, June 26 - Monday, June 29.** Check-in time is 3:00pm on Friday and check-out time is 3:00pm on Monday. You can choose what days/nights you want to stay and also the campsite you'd like. I will just have to know prior to making menus as to who is going. You can go to [www.visitPAparks.com](http://www.visitPAparks.com) to make your reservation. Try to make your reservation as soon as you can so that we all get to be close together. If you have any questions, please contact Ellen Hampton at 319-0570.



**MAKING A DIFFERENCE...TOGETHER**

Our Goal Is To Offer Free To Each Family

- ♥Groceries
- ♥Sneakers to Every Kid
- ♥Backpack Filled With School Supplies
- ♥New Book to Every Kid
- ♥Haircuts
- ♥Family Portraits
- ♥Community Resources
- ♥Health & Safety Services
- ♥Lunch Served All Day
- ♥Kids Zone
- ♥Entertainment

**WAYS TO MAKE A DIFFERENCE**

- Volunteer your time now and/or the event day
- Donate goods or services
- Donate money
- Connections

**1 DAY  
1 EVENT  
5,000  
PEOPLE**

We are providing an opportunity for local businesses, churches and organizations to serve the South Central PA region like never before.

**AUGUST 1, 2015**

LOCATION:  
Northern High School  
653 S. Baltimore St.,  
Dillsburg

For more information:

**ProjectBigLove717@gmail.com**

or

**www.ProjectBigLove717.com**

## THANKS TO THE FOLLOWING

Thanks To The Following: Tom and I would like to thank Elaine McCracken for the lovely vow renewal service she put together for our Parish. And the fact it was held on Valentine's Day made it perfect. Elaine worked so hard to pay attention to so much detail, we really don't think it could have been any nicer. Thank you Elaine for your generosity and a very special night. Would you please thank your daughter and son-in-law for helping out too. And Pastor Roy, you were your usual willing and pleasant self leading the service and officiating for the actual vow renewal. Thank you! How fortunate our Parish is to have such accommodating and talented individuals.

*Mary & Tom Lutz*



Thanks To The Following:

Ron and Blanch for providing the corsages for all the ladies at the reaffirmation of wedding vows.

*Elaine McCracken*

Thanks To The Following:

We would like to thank everyone for all the cards, thoughts, and prayers during the passing of Evelyn Diller. Also, thank you to those who worked in the kitchen serving the food at the luncheon following the service and internment.

*Lois & Ralph Diller*

Thanks To The Following:

Thank you to all who have made soup (etc) and participated in the afternoon and evening Lenten studies!

Thanks To The Following:

Thanks to all who tithe generously so that we can help our neighbors in various ministries. This past month we helped a local woman repair her furnace with a needed service call.

Thanks To The Following: Thank you Elaine for bringing us all together for a celebration of marriage, family, and love on Valentine's Day. The weather was frightful, but the fellowship, delightful!

Thanks To The Following:

Thanks to all who contributed food and helped flip the pancakes and fry the bacon and sausage for the pancake supper!

Thanks To The Following:

Thanks to all who are sharing and listening to ideas and perspectives on our financial challenges and the solutions we seek as congregations and a parish. Please keep in mind that our faith does not necessarily call us to agree or avoid conflict, but to care for each other in this process. Pray for one another.

Thanks To The Following:

Thank you to those who gave toward ELCA world hunger during the Lenten season. The effects of your generosity are felt by many in life changing ways!

## FEBRUARY FINANCIAL INFORMATION

<p style="text-align: center;"><u>Barren's</u></p> <p>Year-to-date income through February:   \$ 11,851.52                  Year-to-date expenses through February:   \$ 15,604.82                  Year-to-date difference as of Feb. 28, 2015:   \$ <b>-3,753.30</b></p>	<p style="text-align: center;"><u>Emmanuel</u></p> <p>Year-to-date income through February:   \$ 8,544.24                  Year-to-date expenses through February:   \$ 10,920.36                  Year-to-date difference as of Feb. 28, 2015:   \$ <b>-2,376.12</b></p>
<p style="text-align: center;"><u>St. John's Franklin</u></p> <p>Year-to-date income through February:   \$ 3,194.00                  Year-to-date expenses through February:   \$ 4,211.00                  Year-to-date difference as of Feb. 28, 2015:   \$ <b>-1,017.00</b></p>	<p style="text-align: center;"><u>Faith United Lutheran Parish</u></p> <p>Year-to-date income through February:   \$ 18,855.25                  Year-to-date expenses through February:   \$ 15,668.39                  Year-to-date difference as of Feb. 28, 2015:   \$ <b>-3,186.86</b></p>



Attendance:

Chris Cressler  
Laurie Hoover  
Jeff Kreider  
Mary Lutz  
Laura Malinoski  
Woody Myers  
Marcy Renshaw  
MaryJo Rodriguez  
Lori Ross  
Carl Shearer  
Roy Stetler  
Tammy Wagner

Respectfully  
Submitted,  
*Mary Lutz,*  
Outgoing Council  
Secretary

**Barren's Council Meeting Minutes - January 13, 2015**

**Call to order** with a quote on the starting point of prayer, and prayer by Pastor Roy.

**Approval of:**

Comptrollers Report: 1st Mary, 2nd Chris

Treasurers Report; Carl: No change

Pastor's Report: Woody 1st, Marcy 2nd

Minutes from Dec. 9, 2014: Woody 1st, Jeff 2nd

Building and Property Report: Oil delivered on 10 Dec. There was air in the line, but the furnace is working better now.

**Old Business:**

- Two additional robes have been received in adult sizes.
- MaryJo, Comptroller, has created an e-mail account dedicated to emails for better organization and communication regarding Parish matters: [treasureful@gmail.com](mailto:treasureful@gmail.com).

**New Business:**

- Welcome to new members, all three-year terms: Laurie Hoover, Lori Ross, and Tammy Wagner. Woody is staying on Council for an additional year.
- New positions for Barren's Council are: Laura Malinoski, President; Jeff Kreider, Vice President; Chris Cressler, Secretary; Marcy Renshaw, Asst. Secretary; Carl Shearer, Treasurer; Woody Myers, Asst. Treasurer; and MaryJo Rodriguez, Comptroller (non-voting).
- Council members are reviewing current bylaws. Changes must include the restructure of law regarding minor children. If any adult will be in one-on-one contact with a minor child, a criminal background check must be done and in place before that contact is permitted.

**Adjournment** with Lord's Prayer, Woody 1st, Marcy 2nd.



Attendance:

Sonny Erford  
Ron Henry  
Helen Kilgore  
Barb Zeigler  
Pastor Roy

Respectfully Submitted,  
*Barb Zeigler,* Secretary

Vice President Sonny Erford called the meeting to order at 7:08PM.

**Emmanuel's Council Meeting Minutes - January 13, 2015**

**Approval of:**

Secretary's Report – 1st by Ron Henry, 2nd by Helen Kilgore

Financial Report – 1st by Helen Kilgore, 2nd by Barbara Zeigler

Pastor's Report – 1st by Ron Henry, 2nd by Helen Kilgore

**Old Business:**

- \$160.00 for the Parish for the Community night at Hoss's on Dec. 13, 2014.
- \$302.59 for Emmanuel for Community night at Hoss's on January 3, 2015.
- Officers for 2015 are: Sonny Erford, President; Stephanie Graham, Vice President; Barb Zeigler, Secretary; Helen Kilgore, Asst. Secretary; and Ron Henry, Treasurer. Ron made a motion to accept these officers, Helen Kilgore 2nd.
- The appreciation luncheon on Dec. 28, 2014 went well.

- There were 11 fruit baskets given out for Christmas.

**New Business:**

- Sonny Erford made a suggestion to get a wheel chair for the church. Council agreed.
- Dec 31 or Jan 1 laws changed for child abuse. The same things that apply for schools now apply for the church.
- Sonny Erford will check with Charlie Rinehart as to when he wants to do the Pot Pie.
- Choir is singing the Christmas Cantata at Elmcroft January 20.
- Next Council meeting will be February 10.

Helen made a motion to adjourn the meeting seconded by Ron at 7:45PM. Meeting was closed with the Lord's Prayer.



**St. John's Franklin Council Meeting Minutes - January 13, 2015**

Secretaries' Report  
Financial Report  
Pastor's Report } all were accepted by motion.

Attendance:  
 Clarence/Sandy Bachert  
 Marlene Stiffler  
 Nancy Bobb  
 Gayle Kolivras

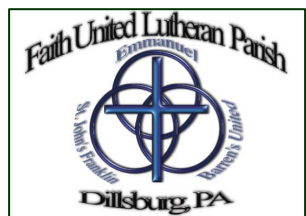
**Business:**

- Andrew Ward from Mountainview will bring the message January 25.
- Sandy made a motion that all officers retain their current seats. Clarence 2nd, motion carried.

Respectfully Submitted,  
*Nancy Bobb*, Secretary

There is **no report for February** because we did not have an official meeting.

Next meeting will be March 10.



**FULP's Abbreviated Council Meeting Minutes - January 13, 2015**

Secretaries' Report  
Financial Report  
Pastor's Report } all were accepted by motion.

Election of officers: Everyone agreed to stay on council one more year. Stephanie was nominated and elected for asst. secretary even though she did not attend the meeting. No other business conducted.

Attendance:  
 Pastor Roy Stetler  
 Ron Henry  
 Marlene Stiffler  
 Gayle Kolivras  
 Carl Shearer  
 Nancy Bobb  
 Laura Malinoski  
 Woody Myers  
 Jeff Kreider  
 Charles Erford  
 Mary Jo Rodriquez

Treasurer Report: \$3,275.00 collected for Giant cards and the Hoss's fund (cash cow) netted \$160.43 for the parish. Report voted on and carried.

Next meeting will be at February 10.

Respectfully Submitted, *Nancy Bobb*,  
 Council Secretary

**Business:**



**Emmanuel's Council Meeting Minutes - February 10, 2015**

President Sonny Erford called the meeting to order at 7:05PM.

**Approval of:**

Secretary's Report – 1st by Stephanie Graham, 2nd by Helen Kilgore  
 Financial Report – 1st by Stephanie Graham, 2nd by Helen Kilgore  
 Pastor's Report – 1st by Stephanie Graham, 2nd by Helen Kilgore

**New Business:**

- Emmanuel will not be having Movie Night until warmer weather.
- We will discuss setting a date for making ham sandwiches at the next meeting.
- Ron made a suggestion to give Jack Zeigler a \$50 gift card for snow removal this winter. Council approved.

Attendance:  
 Stephanie Graham  
 Sonny Erford  
 Ron Henry  
 Helen Kilgore  
 Pastor Roy

**Old Business:**

- Stephanie Graham will donate a wheel chair to Emmanuel.
- Charles Rinehart and his daughter will do the Pot Pie for March 13 & 14. It will sell for \$6.00/quart.

A motion to adjourn was made by Stephanie Graham, 2nd by Ron Henry.

Meeting adjourned at 7:50PM with the Lord's Prayer.

Respectfully Submitted,  
*Barb Zeigler*, Secretary



**Barren's Council Meeting Minutes - February 10, 2015**

**Call to order** by Pastor Roy offering a reading "Sunlight on the Vase" .

**Approval of:**

**Comptrollers Report:** Woody 1st, Mary 2nd

**Pastor's Report:** Jeff 1st, Lori 2nd

**Minutes from Jan. 13, 2015:** Woody 1st, Marcy 2nd

**Treasurers Report; Carl:** Discussion lead by Carl - need 330\$ a week to meet current rate of expenses. At the current rate we have approx. 2 years till out of money in the accounts. More income is needed...council discussed a few options; fundraisers {dinner fundraisers Hoss's, Texas Road House}. Also, is the current donation figure to ELCA necessary? Marcy motioned reducing the amount we give to Synod from budgeted \$400 per month down to \$200 per month. Woody 2<sup>nd</sup>. This change needs to be approved by the congregating. Council is calling a congregational meeting on March 8 to advise and have congregation approve. At this meeting Carl will announce the current situation of

finances. More ideas for increased income needs to be discussed. Possible push for new members and more public use of the church house.

**Building and Property Report:** Carl, Woody: Woody mentioned the moisture problem in the pump area located in the nursery. Ralph will look and see what may be able to be done.

Mowing of the grass will be done by Woody Myers again this year at the same rate.

**New Business:**

- List of current council members and the length of their terms was handed out.
- Child Clearances: as of June 21<sup>st</sup> anyone who interacts with a minor child must have State child Clearances. To be renewed every 3 years. This will mainly impact the nursery attendant list. Will discuss later, Barrens course of action.

**Adjournment** with Lord's Prayer, Marcy 1st, Jeff 2nd.

**Attendance:**

- Chris Cressler
- Laurie Hoover
- Jeff Kreider
- Mary Lutz
- Laura Malinoski
- Woody Myers
- Marcy Renshaw
- MaryJo Rodriguez
- Lori Ross
- Carl Shearer
- Roy Stetler
- Tammy Wagner

Respectfully Submitted,  
*Chris Cressler,*  
Council Secretary



**FULP's Abbreviated Council Meeting Minutes - February 10, 2015**

**Secretaries' Report** }  
**Financial Report** } all were accepted  
**Pastor's Report** } by motion.

**Treasurer Report:** Carl reported that all churches were paid and that \$1,700.00 was collected from Giant cards.

Council agreed to allow Barrens and Emmanuel to skip March's payment; St. John's declined.

**New Business:**

Mary Jo asked if Barrens needed a post office box since they have a mailbox along road. Ron made a motion to eliminate post office box and Sonny 2nd. Council did not vote unanimously.

No other business was conducted.

Next meeting will be at Emmanuel on March 10.

**Attendance:**

- Nancy Bobb
- Charles Erford
- Stephanie Graham
- Gayle Kolivras
- Jeff Kreider
- Laura Malinoski
- Woody Myers
- Mary Jo Rodriquez
- Carl Shearer
- Pastor Roy Stetler
- Marlene Stiffler

Respectfully Submitted, *Nancy Bobb,* Secretary

**APRIL**

- 1 – Gerald Slothower
- 4 – Chad Renshaw
- 8 – Mary Ingle  
William Smith
- 12 – Jessica Whitmoyer
- 13 – Leon Grove
- 14 – Thomas Lutz  
Woody Myers  
Clint Miller
- 15 – Paige Tamecki
- 17 – Rhett Zeigler  
Laura Malinoski
- 18 – Alyce Zerbe
- 24 – Dawn Grib  
RaeAnne Mummert  
Dawn Weyandt
- 25 – Ron Henry

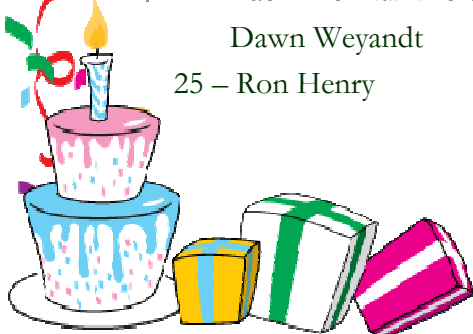
- 26 – Bob Fest III  
Ron Keslar  
Michael Wolfgang  
Quentin Jones
- 28 – Donna Beard

**MAY**

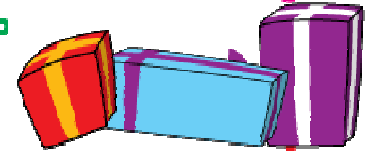
- 5 – Gayle Kolivras
- 7 – Reid Fenicle
- 10 – Shirl Sheibley
- 12 – Norm Hess
- 13 – Hope Williams
- 14 – Randy Graham  
Kevin Hoke  
Francis Myers
- 15 – Kevin Zinn
- 19 – Diane Frazier



- 21 – Diane Kennedy  
Helen Kinter  
Charles Rinehart  
Dean Trump  
Amber Shearer
- 22 – Bob Eline
- 25 – Eric Ensor
- 28 – Arlana Racer
- 31 – Dustin Quickel



Happy Birthday!



**SHAWL MINISTRY**



To those who participate in the prayer shawl ministry, we currently have a number of "prayer shawls" to be given to the homebound and ill...thank you so much! Please consider making lap robes now... 45x36 should work well. Thank you for participating in this prayerful and compassionate ministry.

**GIANT GIFT CARDS**



Giant Gift Cards are here! All three churches have a supply ready for purchase. They can be used in any of their locations to purchase everything from party platters, groceries, to gasoline! They make the perfect thoughtful gift for college students, business associates, friends, or relatives, both near and far.

See:

- Woody Myers at Barren's
- Ron Henry at Emmanuel
- Nancy Bobb at St. John's

**MEAL MINISTRY**



Please contact Pastor Roy or **Laura Malinoski** if you, or someone else you know within our parish, may be in need of meals for any kind of reason. Please don't be afraid to ask for help for yourself or anyone else – it's why this program was started!



## APRIL PARISH WORSHIP LEADERSHIP

Date	Barren's	Emmanuel	St. John's Franklin
April 5	Pastor Roy Stetler	Pastor Roy Stetler	Pastor Roy Stetler
April 12	Pastor Roy Stetler	Pastor Roy Stetler	TBD
April 19	Pastor Roy Stetler	Pastor Roy Stetler	Vicar Micki Kautz
April 26	Pastor Roy Stetler	Pastor Roy Stetler	Vicar Micki Kautz

### Lector

Date	Barren's	Emmanuel	St. John's Franklin
April 5	Marcy Renshaw	Wally Foreman	Gail Berkheimer
April 12	Judy Klugh	Dot Heiges	Gail Berkheimer
April 19	Laurie Hoover	Ron Henry	Gail Berkheimer
April 26	Woody Myers	Darlene Hershey	Gail Berkheimer

### Acolyte / (Crucifer at Barren's)

Date	Barren's	Emmanuel	St. John's Franklin
April 5	Wade Kreider/Zoe Kreider	TBD	N/A
April 12	Kamdyn Balko/Kaelyn Balko	TBD	N/A
April 19	Arlana Racer/RaeAnne Mummert	TBD	N/A
April 26	TBD/TBD	TBD	N/A

### Greeters/Ushers

Date	Barren's	Emmanuel	St. John's Franklin
April 5	Dave & Pam Arndt	Ray Fitton & Jack Zeigler	Jerry Slothower
April 12	John Hampton & Tom Gochenauer	Ray Fitton & Jack Zeigler	Jerry Slothower
April 19	Chris & Heather Cressler	Ray Fitton & Jack Zeigler	Jerry Slothower
April 26	Melissa Gochenauer & Scott Zirkle	Ray Fitton & Jack Zeigler	Jerry Slothower

### Altar Guild

Date	Barren's	Emmanuel	St. John's Franklin
April 5 (white)	Curvin & Judy Klugh	Deb Fager & Helen Kilgore	Gayle Kolivras
April 12 (white)	Marcy Renshaw & Pat Miller	Deb Fager & Helen Kilgore	Gayle Kolivras
April 19 (white)	Marcy Renshaw & Pat Miller	Deb Fager & Helen Kilgore	Gayle Kolivras
April 26 (white)	Kathy Eurich & Jan Keslar	Deb Fager & Helen Kilgore	Gayle Kolivras

### Flower Donors

Date	Barren's	Emmanuel	St. John's Franklin
April 5	The Altland Family	TBD	Lorene Smith
April 12	Kathy & Bill Eurich	TBD	N/A
April 19	Melissa Gochenauer	TBD	N/A
April 26	Mr. & Mrs. Jack McCauslin	TBD	N/A



## MAY PARISH WORSHIP LEADERSHIP

Date	Barren's	Emmanuel	St. John's Franklin
May 3	Pam Arndt	Pam Arndt	Vicar Micki Kautz
May 10	Pastor Roy Stetler	Pastor Roy Stetler	Elaine McCracken
May 17	Pastor Roy Stetler	Pastor Roy Stetler	Vicar Micki Kautz
May 24	<b>Parish Service @ Emmanuel</b>	Pastor Roy Stetler	<b>Parish Service @ Emmanuel</b>
May 31	Pastor Roy Stetler	Pastor Roy Stetler	TBD

### Lector

Date	Barren's	Emmanuel	St. John's Franklin
May 3	Jeff Kreider	Joan Hess	Nancy Bobb
May 10	Amber Shearer	Helen Kilgore	Nancy Bobb
May 17	Laurie Hoover	Elaine Zeiders	Nancy Bobb
May 24	<b>Parish Service @ Emmanuel</b>	Charlie Rinehart	<b>Parish Service @ Emmanuel</b>
May 31	Clint Shearer	Barb Zeigler	Nancy Bobb

### Acolyte / (Crucifer at Barren's)

Date	Barren's	Emmanuel	St. John's Franklin
May 3	Kamdyn Balko/Kaelyn Balko	TBD	N/A
May 10	Logan Racer/Gage Mummert	TBD	N/A
May 17	Arlana Racer/RaeAnne Mummert	TBD	N/A
May 24	<b>Parish Service @ Emmanuel</b>	TBD	<b>Parish Service @ Emmanuel</b>
May 31	Wade Kreider/Zoe Kreider	TBD	N/A

### Greeters/Ushers

Date	Barren's	Emmanuel	St. John's Franklin
May 3	Ralph & Lois Diller	Pearl Foreman & Helen Kilgore	Marlene Stiffler
May 10	Diane Dorsey & Arnetta Kimmel	Pearl Foreman & Helen Kilgore	Marlene Stiffler
May 17	Bob & Linda Eline	Pearl Foreman & Helen Kilgore	Marlene Stiffler
May 24	<b>Parish Service @ Emmanuel</b>	Pearl Foreman & Helen Kilgore	<b>Parish Service @ Emmanuel</b>
May 31	Bob & Kay Fest	Pearl Foreman & Helen Kilgore	Marlene Stiffler

### Altar Guild

Date	Barren's	Emmanuel	St. John's Franklin
May 3 (white)	Kathy Eurich & Jan Keslar	Barb & Jack Zeigler	Sandy & Clarence Bachert
May 10 (white)	Vicky Merovich & Louise Watts	Barb & Jack Zeigler	Sandy & Clarence Bachert
May 17 (white)	Vicky Merovich & Louise Watts	Barb & Jack Zeigler	Sandy & Clarence Bachert
May 24 (red)	<b>Parish Service @ Emmanuel</b>	Barb & Jack Zeigler	<b>Parish Service @ Emmanuel</b>
May 31 (white)	Deb & Michael Wolfgang	Barb & Jack Zeigler	Sandy & Clarence Bachert

### Flower Donors

Date	Barren's	Emmanuel	St. John's Franklin
May 3	Vicky Merovich	TBD	N/A
May 10	Richard & Jenny Stine	TBD	N/A
May 17	Terry & Bev Gochenauer	TBD	N/A
May 24	<b>Parish Service @ Emmanuel</b>	TBD	<b>Parish Service @ Emmanuel</b>
May 31	Kevin & Pat Hoke	TBD	N/A



# APRIL 2015

Sun	Mon	Tue	Wed	Thu	Fri	Sat
			1 11am - Ministerium  7pm - B - Choir	2 <b>Maundy Thurs</b> 7pm - B - Maundy Thursday Service (Rev. Debbie)	3 <b>Good Friday</b> 7pm - E - Good Friday Service (Rev. Roy)	4 <b>Holy Saturday</b> 9am - E - Caring Closet  7pm - CLC Fileys Vigil Service (Rev. Debbie & Roy)
5 <b>Easter</b> 7:00am - SJ Sunrise Svc (Rev. Roy) 9am - E (Rev. Roy) 10:30am - B (Rev. Roy)	6	7	8 7pm - B - Choir	9 7pm - E - Choir	10	11
12 9am - E (Rev. Roy) 10:30am - B (Rev. Roy) 10:45am - SJ (TBD)	13 1-7pm Central PA Blood Drive @ Church House	14 7pm - All Council Meetings @ E  8pm - Parish Council Meeting @ E	15 7pm - B - Choir	16 10am - W Shore Ministerium  7pm - E - Choir  6:30pm - E Worship & Music	17	18 8am - Men's Breakfast @ Bakers  8am - B - Mugs-N-Muffins
19 9am - E (Rev. Roy) 10:30am - B (Rev. Roy) 10:45am - SJ (Vicar Micki)	20	21	22 7pm - B - Choir	23 7pm - E - Choir	24	25 7pm - E - Spring Music Fest
26 9am - E (Rev. Roy) 10:30am - B (Rev. Roy) 10:45am - SJ (Vicar Micki)  5-7pm - Spaghetti supper @ Church House (Habitat)	27	28	29 7pm - B - Choir	30 7pm - E - Choir		

# MAY 2015

Sun	Mon	Tue	Wed	Thu	Fri	Sat
					1  7:30pm Movie Night  <i>Rev. Roy - Vacation</i>	2  9am - E - Caring Closet  <i>Rev. Roy - Vacation</i>
3  9am - E (Pam Arndt) 10:30am - B (Pam Arndt) 10:45am - SJ (Vicar Micki) <i>Rev. Roy - Vacation</i>	4  <i>Rev. Roy - Vacation</i>	5  <i>Rev. Roy - Vacation</i>	6  11am - Ministerium  7pm - B - Choir	7  7pm - E - Choir	8	9  Pickle Fest in Dillsburg
10 <b>Mother's Day</b>  9am - E (Rev. Roy) 10:30am - B (Rev. Roy) 10:45am - SJ (Elaine McCracken)	11	12  7pm - All Council Meetings @ B  8pm - Parish Council Meeting @ B	13  7pm - B - Choir	14  7pm - E - Choir	15	16  8am - Men's Breakfast @ Bakers  8am - E - Mugs-N-Muffins
17  9am - E (Rev. Roy) 10:30am - B (Rev. Roy) 10:45am - SJ (Vicar Micki)	18  <b>Newsletter Deadline</b>  7pm - Outreach Comm. Mtg. @ B	19	20  7pm - B - Choir	21  10am - W Shore Ministerium  7pm - E - Choir	22	23
24 <b>Pentecost</b>  9am - E - Parish Service (Rev. Roy)	25	26	27  7pm - B - Choir	28  7pm - E - Choir	29	30
31 <b>Holy Trinity</b>  9am - E (Rev. Roy) 10:30am - B (Rev. Roy) 10:45am - SJ (TBD)						



**Faith United Lutheran Parish**

- Barren's United
- Emmanuel
- St. John's Franklin

Parish Mailing Address:  
 232 Kralltown Road  
 Dillsburg, PA 17019

Parish Phone: 717-432-4802

Parish Fax: 717-432-4802

E-Mail: [secretaryfulp@gmail.com](mailto:secretaryfulp@gmail.com)

Website: [www.faithunitedlutheran.net](http://www.faithunitedlutheran.net)

Facebook Fan Page:  
 Faith United Lutheran Parish

**Our Mission Statement:** *Our mission is to be open to God's presence in our hearts, in our minds and in our world; to love God and one another; and to proclaim our Lutheran theology of God's love and grace for all people.*

**Pastor Roy Stetler** – Office: 717-432-4802  
 Cell: 717-350-5057  
 Email: [revstetler@gmail.com](mailto:revstetler@gmail.com)

**Deb Racer** (Newsletter Editor) - Office: 717-432-4802  
 Email: [secretaryfulp@gmail.com](mailto:secretaryfulp@gmail.com)

**MaryJo Rodriguez** (Comptroller) - Email: [treasurefulp@gmail.com](mailto:treasurefulp@gmail.com)

**Parish Council Members:**

- |                                      |                                       |
|--------------------------------------|---------------------------------------|
| President - <i>Ron Henry</i>         | Comptroller - <i>MaryJo Rodriguez</i> |
| Vice Pres. - <i>Laura Malinoski</i>  | Others: - <i>Sonny Erford</i>         |
| Secretary - <i>Nancy Bobb</i>        | - <i>Gayle Kolivras</i>               |
| Asst. Sec. - <i>Stephanie Graham</i> | - <i>Jeff Kreider</i>                 |
| Treasurer - <i>Carl Shearer</i>      | - <i>Marlene Stiffler</i>             |
| Asst Treas - <i>Woody Myers</i>      |                                       |

**Deadline for June/July 2015 Noteworthy Newsletter is Monday, May 18.**

**Faith United Lutheran Parish**

232 Kralltown Rd.  
 Dillsburg, PA 17019



Parish Member Name
Street Address
City, ST ZIP Code

