



# Faith United Lutheran Parish

# NOTEWORTHY NEWS

OCTOBER/NOVEMBER 2015

## *Message from Pastor Roy*

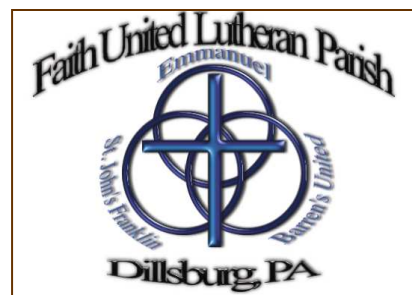
Desmund Tutu was a powerful spiritual leader at the end of apartheid as South Africa transitioned into a time of reconciliation and equal rights for the native blacks in that country. He was once asked about his most profound experience. He was 9 years old and walking down a path with his mother. A tall white man in a black suit approached them. It was the custom for blacks to step off the path and nod their heads in a gesture of respect. Before they had the chance to do so, the tall man stepped off the path. As they passed he tipped his hat toward his mother as a gesture of respect toward her. His name was Trevor Huddleston and he was an Anglican priest who strongly opposed apartheid. When his mother explained that he stepped off the path because he was a man of God, Tutu decided at that moment that he too wanted to be an Anglican priest and a man of God. Huddleston became a mentor for Tutu and taught by example that all are created equally in the image of God.

On Wednesday September 2<sup>nd</sup>, at the general invitation of Presiding Bishop Elizabeth Eaton, Martin Zimmann, pastor of Trinity, Mechanicsburg and I went to Washington DC to be with and listen to the pastoral leaders of three African

American Methodist denominations. We heard them express their grief for family members and friends taken by gun violence which plagues their youth and community. We also heard their deep sadness over being mistrusted, feared, and suspected simply because of their appearance. It was a great privilege and honor to be in their presence and to speak with a few.

As the day came to a close, I was disturbed by the suffering of our fellow sisters and brothers in Christ, their children, and grandchildren. We are often not aware of our privilege, and all the more so as we have few relationships with people of other races and cultural backgrounds. When we see the difficulty of Black America, we are tempted to blame them or suspect them of having some kind of agenda to take advantage of us. The same is true for immigrants who wish to start a new life in the US by working hard much like our foremothers and fathers worked to forge a good life in a new land.

Despite these shared sources of patriotism, I often hear political language of mistrust and hatred, seizing on the instinctive fear of those different from us. Unfortunately, we sometimes are swayed by negative



## INSIDE THIS ISSUE:

|                                       |       |
|---------------------------------------|-------|
| Pastor Roy's Message                  | 1 & 9 |
| Parish News (Old)                     | 2 - 5 |
| Parish News (New)                     | 6-11  |
| Thank-You's                           | 12    |
| Financial Information                 | 12    |
| Council Minutes                       | 12-14 |
| October/November Birthdays            | 15    |
| October/November Worship Participants | 16-17 |
| October/November Calendars of Events  | 18-19 |
| Parish Information                    | 20    |

opinions when they are spoken forcefully, regardless of whether they are founded upon gracious abundance or a mindset of scarcity. Ultimately, as individuals, as community, as church, as a nation, we must ask, "What will be our legacy?" Will it be that we protected what was ours, and it turned into dust? Or will it be that we graciously shared, gave

*Continued on pg. 9*

### YOUTH IMPACT PROJECT - AUGUST 1, 2015

Thank you for your support of Youth Impact Project this year. The event was awesome. Because of your generous support, we were able to give bags of groceries to 662 families this year. What a blessing that was. Many of you came out and volunteered at the event or had others from your church volunteer. I

appreciate everything you did to support this event. Without your help, we would not have been able to do what we did to bless the many attendees.

Our parish donated around 975 bars of soap for this event. Thanks to all who participated.



### YOUTH OUTING TO SKY ZONE - AUGUST 9, 2015

Our youth enjoyed pizza at Al's in Dillsburg and then lots of jumping fun on the trampolines at Sky Zone in Mechanicsburg the afternoon of Aug. 9. Thank you to the parish for providing this fun event for us. Thank you Amber Shearer for the photos from Sky Zone.



### MOVIE NIGHT



The movie for August was “God is not dead”. It is a story about a college professor that was an atheist. The first day of class he asked all the students to sign a statement declaring that God is dead. One student who was a Christian refused, so the Professor challenges him to prove him wrong in a debate, and the entire class would be the Jury. The debates that followed will keep you glued to your chair and you will not fall asleep at any time during this movie. In attendance for this viewing were 12 youth and 4 adults. Thank you to all that assisted with the showing of the movie and also donated the refreshments.

For the month of September the movie was “Do you Believe”. It revolves around a dozen different souls, all moving in different directions who unexpectedly intersect, and they are about to discover there is power in the Cross of Christ, even if they don’t yet believe. What follows is a faith fueled journey that powerfully impacts everyone it touches. This film demands and keeps your complete attention and it will captivate you until the very end where you too, will ask yourself the ultimate question: Do You Believe? There were only 6 adults in attendance. Thank you to all that donated refreshments and helped to make the viewing of these films possible.

### WILLING WORKERS DEDICATION - AUGUST 23, 2015

A dedication service was held recently at Barren’s for the memorial stones in our cross outside the church. The Willing Workers class started the cross after the untimely death of Thelma Nell; after a Willing Workers meeting she was killed in a car accident outside the church in 2000. We wanted to remember members of the Willing Workers class and all that they have contributed to the work of our church. Each member’s name that you see was always ready to serve -- no matter where needed! We thank them for their service.



**VICAR MICKI KAUTZ COMMISSIONING SERVICE - AUGUST 28, 2015**

AiM  
Commissioning  
of Vicar Micki



Friday, **August 28**, 7:00PM at Trinity Lutheran Church in Mount Joy, PA was the ordination of **Andrew Geib** and Commissioning of **Micki (Marilyn) Kautz**. Micki will serve St. Michael's (Rossville) and St. John's (Franklin) Lutheran Churches as an Associate in Ministry under the pastoral leadership of the Rev. Roy Stetler, Faith United Lutheran Parish.

Congratulations  
Vicar Micki

**GARDEN OF HOPE**

The garden has produced 547 pounds of fresh vegetables, as of this writing, for New Hope Ministries. All the veggies were thankfully accepted by New Hope and they were used to help feed those in need. There were tomatoes, onions, radishes, bell and hot peppers, red skinned and white skinned potatoes, peas, squash, cucumbers and green, yellow and lima beans. Included would have been red beets, cabbage and lettuce, however some garden varmints decided that that was not going to happen. The sweet potato plants are still green and lush so



they have yet to be harvested. The other plants such as the tomatoes, beans, squash and the white potatoes have outlived their production and have been removed and added to the compost pile. A second planting of radishes, onions and turnips have been planted to hopefully extend the growing season and as of this writing, those starving garden varmints are dining elsewhere. You will receive an end-of-season article as the garden season closes. Stay tuned.

**BLOOD DRIVE - SEPTEMBER 14, 2015**

We had 40 donors of which 34 pints were acceptable. This will save 102 lives. Thank you Donna Rupp and Linda Gochenauer for the delicious food. It is very much appreciated. Blood drives in 2016 will be Monday, April 11 and Monday, September 12.



**FALL MUSIC FEST**



The Fall Music Fest was very successful. There were 71 in attendance and the offering totaled \$385.25 and every cent went directly to New Hope Ministries the next Monday morning, where it was graciously accepted with much appreciation. The musicians and all the singers were at the top of their game, that's for sure. The musical selections were not only beautiful but were inspiring as well. The personal witnessing from several of the singers was truly heart felt and inspirational. Those attending stayed after the final presentation and enjoyed a varied selection of

refreshments while expressing their sincere gratitude to the musicians and singers for delivering such a beautiful program. Many had commented that they felt the Spirit that night and they can hardly wait for the next program. So if you could not make this one, keep an eagle eye out for the date and time for the next Music Fest, because you surely do not want to miss two in a row. Thank you to all that donated refreshments, set up the food tables and cleaned up afterwards. This event would not have been possible without all your assistance and cooperation.

**PARISH DIRECTORY CHANGES**



Please let Deb Racer know of any changes to our directory so they can be listed in our issues of the "Noteworthy News" newsletters. Deb can be contacted at the parish office (432-4802) or by email ([secretaryfulp@gmail.com](mailto:secretaryfulp@gmail.com)).

- Wally Foreman - Email address change to: [claudef2@verizon.net](mailto:claudef2@verizon.net)
- Ryan Scott Zeigler - Born 08-31-2015 (Add to Alison & JR Zeigler family)

**HERSHEY ENTERTAINMENT FUNDRAISER**

As a fundraiser for FULP, we have contracted with Hershey Entertainment for volunteer opportunities in various areas of the establishment (Hersheypark, Hersheypark Stadium, Hersheypark Arena, or the Giant Center); there are several pages of this information available at each church, please look over it. For every 3-5 hour shift a volunteer works, they will receive a free Hersheypark pass and earn the parish \$6.00/hr of each shift completed. See Laura Malinoski or MaryJo Rodriguez if you are interested in participating in this fundraiser and/or if you need more information.



**SOUP & BAKE SALE**



Friday, **October 2, 9AM – 3PM** the York County Farm Women Group 17 will be holding a soup/bake sale at Barren's Church House.

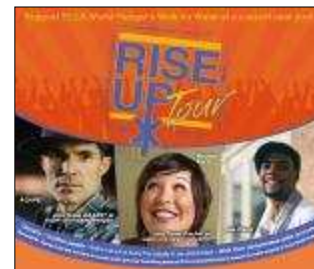
**WHERE ARE THEY NOW**

Congratulations to Ashley Hampton Shields who recently received her PhD in Clinical Psychology from Temple University. She is married to Brian Shields and is currently doing post graduate work at John's Hopkins Hospital in Baltimore, Maryland as a children's clinical psychologist.



## RISE UP TOGETHER CONCERT TOUR

The Office for Children, Youth & Family is partnering with St. Matthew, York, to bring the **Rise Up Together Concert Tour** to our synod on Sunday, **October 4**, beginning at 3:00PM. Featuring the music of Agape, Rachel Kurtz & spoken word artist, Joe Davis, this tour provides participants a powerful afternoon of music, storytelling and worship. Whether you attended the ELCA Youth Gathering or not, come out and catch these talented artists as they make their only stop in central PA. This is an all-age show with a suggested entry fee of \$10, and pre-registration is encouraged, call St. Matthew's office at (717) 845-2721.



## BLESSING OF THE ANIMALS SERVICE

On Sunday, **October 4** at 3:00PM, you & your animal friends are invited to Emmanuel (outside) for a **Blessing of the Animals**. All of your critters are invited for a blessing as we commemorate St. Francis of Assisi day, patron saint of animals & ecology. Rain date is the following Sunday, October 11.

## MID-WEEK STUDY

### *"Faith, Confidence & Doubt in Daily Life"*

What does Christian faith have to do with our ordinary, day-to-day life? We will be exploring faith through a life-long lens: How does faith look in childhood, youth, early adulthood, older adulthood? In this six-session study, Martin Marty helps guide us through an examination of the seasons of faith, and discusses how we can grow and enliven our faith life in each of those seasons.

We are offering 2 different study times to accommodate varying schedules.

#### Square Bean Tuesdays at 1:00PM

October 6  
October 13  
October 20  
October 27  
November 3

#### Filey's Wednesdays at 7:00PM

October 7  
October 14  
October 21  
October 28  
November 4

### *"Taste and See Experiencing the Stories of Advent and Christmas"*

Using Scripture combined with an imaginative reading approach introduced by St. Ignatius, "Taste and See" invites us to experience the stories of the Advent season with our senses.

#### Square Bean Tuesdays at 1:00PM

December 1  
December 8  
December 15  
December 22

Please see sign-up sheet so we have an idea of how many people to expect and how many books to order. Please include your phone # in case of inclement weather or schedule changes.

## MUGS-N-MUFFINS



8:00AM Mugs-N-Muffins schedule for the remainder of the year:

- **October - Cancelled**
- **November 21** at Barren's
- **December 19** at Emmanuel

## MEN'S BREAKFAST



8:00AM Men's Breakfast (at Baker's Restaurant in Dillsburg) schedule for the remainder of the year:

- **October - Cancelled**
- **November 21**
- **December 19**

# A Musical Evening

To benefit the Dillsburg Area Public Library

## Celebrate the History

A history of the Library that highlights its journey will also be presented. Refreshments will follow with an opportunity to share your past Library involvement, and the chance to be recorded. Pictures are also welcomed!

Please consider helping to preserve the Library's wonderful past as it moves into the future! A good will offering will be taken.\*

### WHEN:

Saturday, October 10<sup>th</sup> at 7pm.

### WHERE:

Christ Lutheran Church Filey's  
15 S. Filey's Rd, Dillsburg PA

### Featuring the music of:

- The Dillsburg Brass
- The CASA Charter School
- And a Wonderful Variety of Area Professional Musicians

### For more information contact:

Christ Lutheran Church at 717-432-4878, call the Dillsburg Library at 717-432-5613, or e-mail either Carole Knisely at [cknisely3@comcast.net](mailto:cknisely3@comcast.net) or the Women's Club [steelermcb@comcast.net](mailto:steelermcb@comcast.net)

\*All donations collected at this event will go towards the renovation of the new Library building at 204 Mumper Lane.

## PINCHOT PARK CROP HUNGER WALK

October 11, 2015

1:00 p.m. Registration

1:30 p.m. Walk begins



Don't miss out on this event to help fight hunger. Why not join the walk? Walk will begin at 1:30 p.m. at Pinchot Park at the Conewago Day Use area off Alpine Rd.

CROP Hunger Walks are community-wide events sponsored by Church World Service and organized by religious groups, businesses, schools and others to raise funds to end hunger in the U.S. and around the world.

Visit <http://hunger.cwsglobal.org> for more information about Church World Service.

## EMMANUEL'S FOOD STAND AT FARMER'S FAIR



Emmanuel will have a stand at Farmer's Fair in the Ace Hardware parking lot on Saturday, **October 17** from 7:00AM - 2:00PM, or until we are sold out. Once again we will have some produce, home canned goods such as sauerkraut, pickles, zucchini relish, etc. Home baked goods will be available also -sticky buns, cookies, cakes, breads, fudge, and pies. Just to note, we will

hold purchased goods to be picked up later at your convenience saving you from carrying them around all morning. Item donations are greatly appreciated and we thank you for your continued support. Come see us at the Fair.



## LUTHERAN CAMPING CORPORATION - FALL EVENTS



- **Oct. 4 3:00-5:30PM - Capture the Flag Spectacular @ Kirchenwald** - Review your camp map, paint your face, and practice your cone zone celebration dance. Campfire worship to follow.
- **Oct. 6-8 Book Study Retreat @ Nawakwa** - This retreat will focus on the book "Stories from the River by Ursula Hegi". This mid-week retreat begins Tuesday morning and ends with lunch on Thursday. All meals are included in the price of \$135/pp.
- **Oct. 18 Fall Foliage Days @ Kirchenwald & Nawakwa** - Come to either camp for a fall afternoon (1PM-6PM) and enjoy some of your favorite camp activities. An evening meal will be provided. Register by Oct. 2 \$7/pp.
- **Oct. 24-25 KirchenGolf Retreat @ Kirchenwald** - Hit the links in an overnight retreat at three local courses. Golfers of all levels welcome! Sign up as a foursome, or meet your team when you arrive. Register by Oct. 3. \$190/pp includes up to two overnights, three meals, and all rounds of golf.
- **Nov. 1 Quilt Auction @ Nawakwa** - 2PM Silent Auction, 3PM Live Auction, dinner following the Live Auction. All proceeds from the day benefit the corporation's Endowment Fund, making camping possible for generations to come.

Register online at:  
[www.lutherancamping.org](http://www.lutherancamping.org)  
 Or  
 call 717-677-8211

Register Online



## HERITAGE DAY PARISH SERVICE

October 18  
10:45AM at

St. John's Franklin



Let's celebrate your Christian heritage, the heritage of the parish churches, and the heritage of our community! Bring memorabilia depicting any of these for table and board display. Any vintage attire is welcome. There are tentative plans for a tribute to WW II veterans. Invite family, friends, and past members!

Also, please bring a favorite food dish to share, heritage or not, for the covered dish meal following worship.

## REMAINING PARISH/COMBINED SERVICES FOR 2015

**October 18** – 10:45AM Parish Worship at St. John's  
(Heritage Day) - Pastor Roy

**December 27** – 9:00AM Lessons and Carols  
Worship at CLC Fileys - Pastor Debbie  
presiding





*Continued from pg. 1*

opportunity to the vulnerable, and were rewarded with friendship and self-respect? The choice lies before us. The decision is ours. The way we spend our time and resources will provide the answer. We have many untapped resources. May we answer Christ's call to take up our cross (faithful sacrifice) and follow. It sounds painful and disturbing, but the cross is truly our path to freedom and joy.

Please join me in praying for minority and immigrant communities, and for refugees who seek safety and wellness for their families. Let us act, as we are able, to support them and be reminded how much we share in common. It is an ongoing struggle to set aside our instinct to fear those who are different from us. God give us courage to step off the path and tip our hat in faith to those whom we might fear and mistrust.

Peace, Pastor Roy

**INSTALLATION OF  
ASSOCIATE IN MINISTRY, MICKI KAUTZ**



Sunday, **October 25** at 3:00PM Vicar Micki will be installed at St. John's with Pastor David Schreffler preaching. Vicar Micki has been called to serve on the staff of Faith United Lutheran Parish, primarily working with St. John's and St. Michael's (Rossville). Please join us in this special worship service welcoming Vicar Micki as our AiM. The color of the day will be red.

**WHAT'S NEW IN THE PARISH**

As of September 13, FULP began providing pastoral and worship leadership on a contractual basis for St. Michael's in Rossville. Vicar Micki will be paid by St. Michael's for the work she is doing on their behalf. Pastor Roy will provide for their 9:00AM service the first Sunday of each month with Vicar Micki leading at Emmanuel in exchange. Pastor Roy will continue as usual to lead services at Barren's 10:30AM service. The ministry of Pastor Roy for St. Michael's will be offset by the ministry of Vicar Micki for the parish. Vicar Micki will continue to lead services at 10:45AM for St. John's Franklin 2-3 times per month.

**NEW HOPE DILLSBURG CAMPAIGN FUND**

**Dillsburg Campaign Fund** In 2016, New Hope is planning to build a new food pantry and outreach center in Dillsburg. We are hoping to acquire the old feed mill property on 2nd street, right next to our current office. This will replace the decades old current facility that has significant space limitations and condition problems. The new facility will also provide space to house New Hope's home office. Would you consider helping make this campaign a success by donating or pledging to help us meet our goal? Contact Eric Saunders, 432-2087 X202.





## TRICK-OR-TREAT

Emmanuel is planning to have their annual sidewalk stand in Franklinton at the church to treat the kids (& those young at heart) from 6:00PM - 8:00PM. It has not been determined if it will be Thursday, Oct. 29 or Saturday, Oct. 31. See weekly bulletin announcements closer to the event. We'll be grilling hot dogs and also giving out candy, cider, hot chocolate, and various other snacks. All donations will be appreciated. Stop by and join in the fun.

## CPR/AED/First Aid

**October 31**

**9:00AM – 12:00PM**

Filey's will hold a CPR/AED/First Aid class. The cost to attend is \$45.00 per person. Please let Pastor Debbie Mahady know if you are interested. We need at least six participants to hold the class.



## DAYLIGHT SAVING TIME



We will revert to standard time **November 1.**

**Don't forget to change your clocks so you arrive at church on time.**

## ALL-SAINTS' DAY (NOVEMBER 1)



All Saints' Day is the day Christians give thanks for all the good people God has placed in their lives, especially those who are already with God in heaven. It is also a day when Christians give thanks for the presence of the Holy Spirit in their lives and in the lives of all people. All Saints is celebrated the **first Sunday in November**, during the season of Pentecost. Remember and honor the Saints in your life (in the cemetery, in the church) on All Saints' Sunday. As has become our custom at St. John's Franklin, you are invited to bring photos of Saints in your life to place on the altar for All Saints' Sunday, November 1. For our shut-ins, ask another member to bring the item for you.

We remember our church family (listed below) who have passed away since last All Saints' Day:

**Luella R. Byers** - Barren's  
**Rodney L. Deardorff** - Barren's  
**Evelyn R. Diller** - Barren's  
**Florence R. Kitner** - St. John's

## HAYRIDE & CHILI COOK-OFF

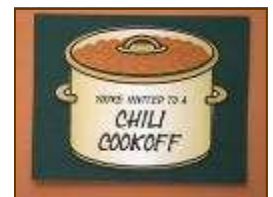
DATE: FORTHCOMING

Due to schedule conflicts, the date of the Hayride and Chili Cook off is changing. As soon as a new date is decided, we will let you know. Check weekly bulletin announcements for the new date.

- **HAYRIDE** - The wagons will be departing from Barren's parking lot. Hotdogs, hot chocolate, & snacks will follow in the Church House.



- **"CHILI CHALLENGE"** - Do you have a great Chili Recipe? I challenge everyone to bring your rockin' chili recipe. We will cook-off the day of the Parish Hayride, that way everyone can sample the chili. Prizes will be awarded.



Sign-up sheets are at each church so we have an idea of how many tractors and wagons we will need for the hayride, what side dishes will be brought, and who is participating in the chili cook-off contest.

**TIME TO ORDER POINSETTIA PLANTS FOR CHRISTMAS**

It's soon time to think about your order of poinsettias for our Christmas services.



St. John's –Look for order forms in the bulletin late October/early November or call Gail Berkheimer after 7:00PM at 432-1405.

Barren's - Look for order forms, available in late October/early November. There will be various sizes and prices to choose from. Any questions, please see Mary Jo Rodriguez.

Emmanuel - We will be taking orders for Christmas Poinsettias to decorate the chancel for Christmas Eve. There will be various sizes and prices to choose from. Look for more information in October.

**HARVEST HOME**

**November 8** at ALL THREE CHURCHES. A time to recognize the abundance God provides in our community. Bring canned & packaged goods to fill the Harvest Table. We will also be collecting monetary donations to buy pigs...details to follow.



**REMAINING 2015 OUTREACH MEETINGS**



**November 16** - 7:00pm at Barren's

**THANKSGIVING NEW HOPE BASKETS**

FULP will be collecting 100 boxes of pie crust, for the Thanksgiving baskets, each Sunday till **November 15**. If you also want to help with the packing of the boxes at New Hope on Friday, Nov. 20, be there from 12-4:00PM. Distribution of the baskets will be November 21 at a time to be announced later.



**GIVING TREE**

Once again we will have a Giving Tree at Barren's and Emmanuel for New Hope Ministries "Christmas Blessing Express". Ellen/Gail has a list of ideas for gifts to be purchased and will post them soon. No specific cost is given. Gifts (UNWRAPPED) can be returned to Barren's/Emmanuel no later than Sunday, **December 13** or taken directly to New Hope Ministries no later than **Monday, December 14**. Clients will then be able to "shop" (from our unwrapped gifts) for items needed for their families. Volunteers will then be available to wrap gifts for them, if needed. Thank you for your generosity and love to our neighbors in need. With your support, we can make the Season one of hope and love. Any questions, see Ellen Hampton or Gail Stetler.

**COMMUNITY THANKSGIVING SERVICE**

Dillsburg's annual Thanksgiving service will be held at Cumberland BIC (1071 York Rd., Dillsburg) Tuesday, **November 24** at 7:00PM with Pastor Debbie Mahady preaching. Bring along a donation or canned food items for New Hope Ministries as we celebrate God's goodness and abundance. The Community Thanksgiving Service is sponsored by the Dillsburg Ministerium. All are welcome and encouraged to attend.



New Hope Ministries



## THANKS TO THE FOLLOWING



I have incredible news. The ELCA Malaria Campaign just reached its fundraising goal of \$15 million. Thank you for being a part of this monumental milestone and helping us protect countless lives from this preventable, treatable disease. **We couldn't have done it without you!**

Five years ago ELCA members, congregations and synods came together, dreamed big with our Lutheran companion churches and partners, and set out to raise \$15 million for malaria programming. **Today we celebrate all that we have accomplished together.**

Working with our Lutheran companions and partners in 13 African countries, we have brought about lasting change. But our work is not over. While the ELCA Malaria Campaign will officially come to an end on Jan. 31, 2016, our commitment to ending deaths from this disease will not. In the coming years, support to our companions and partners to address malaria will come through gifts to ELCA World Hunger, which has a long history of supporting health-related work.

Without you, none of this would have been possible. Thank you for your prayers, your partnership and your generosity.

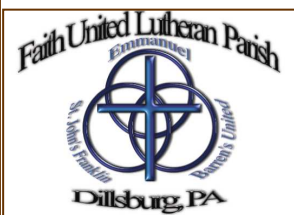
Together in Christ's service, Christina Jackson-Skelton, Executive Director, Mission Advancement Evangelical Lutheran Church in America

### Thanks To The Following:

Thank you to Arnetta, Jan, Donna, and Linda who served and cleaned up and anyone else who made food for the Blood Drive.

## AUGUST FINANCIAL INFORMATION

|  |  |
|--|--|
| <u>Barren's</u>  | <u>Emmanuel</u>  |
| Year-to-date income through August: \$ 62,936.92                 | Year-to-date income through August: \$ 38,857.79                 |
| Year-to-date expenses through August: \$ 70,213.49               | Year-to-date expenses through August: \$ 44,098.00               |
| Year-to-date difference as of Aug. 31, 2015: \$ <b>-7,276.57</b> | Year-to-date difference as of Aug. 31, 2015: \$ <b>-5,240.21</b> |
| <u>St. John's Franklin</u>                                       | <u>Faith United Lutheran Parish</u>                              |
| Not available at this time                                       | Year-to-date income through August: \$ 82,447.75                 |
|  | Year-to-date expenses through August: \$ 82,132.43               |
|  | Year-to-date difference as of Aug. 31, 2015: \$ 315.32           |



### FULP's Abbreviated Council Meeting Minutes - June 9, 2015

Secretary's report, financial report, and Pastor's report were all accepted by motion.

for people willing to serve on this committee. Laura and Steph volunteered.

Attendance:

- Nancy Bobb
- Charles Erford
- Stephanie Graham
- Ron Henry
- Jeff Kreider
- Laura Malinoski
- MaryJo Rodriguez
- Carl Shearer
- Pastor Roy Stetler

The treasurer's report: Carl reported that \$800.00 was collected in May for Giant cards and \$400.00 collected for Habitat for Humanity.

Outreach Committee: The committee had a good meeting. Pastor Roy asked

Worship Committee: Pastor requests that there be at least one person from each church serving on this committee. There are none at this time. This is how it was set up at the start of our parish and has since stopped for many reasons.

Respectfully Submitted, *Nancy Bobb*, Council Secretary



**Barren's Council Meeting Minutes - June 9, 2015**

**Approval of:**

Minutes from: April: Laurie 1<sup>st</sup>, Jeff 2<sup>nd</sup>

May: Lori 1<sup>st</sup>, Tammy 2<sup>nd</sup>

Comptrollers Report: Jeff 1<sup>st</sup>, Laurie 2<sup>nd</sup>

Treasurers Report: Carl mentioned we received a memorial donation; \$20,000 put into a CD @ Members 1<sup>st</sup>.

Pastor's Report: Tammy 1<sup>st</sup>, Lori 2<sup>nd</sup>

Building and Property Report: Ralph Diller talked about remodeling the church house (bathrooms). Would like to make one handicap accessible (with a baby changing station). Talked about making both bathrooms unisex with just one bathroom for handicap. Motion made by Lori, 2<sup>nd</sup> by MaryJo; motion carried. Council informed Ralph to get bids for work to be done. Nothing new on this at this time.

**Old Business:**

- Reminder on Vicar Micki; she has been well received. Laurie made a motion that we make a call for Vicar Micki (AiM). Lori 2<sup>nd</sup>, motion carried. Next step is for the congregation to vote. Congregational meeting June 14, 2015 .
- Hershey Park Fundraiser – MaryJo stated paperwork was sent in.

**New Business:**

- Comments from Laura and Pastor Roy over the Synod meeting – The Bishop had a great message and very relevant. Highlighting: changes and new ways need to be explored. Technology, Community events, forward thinking... 1 church-1 building-1 pastor a way of the past. Focus on ministry and need to be open to new ways. The website from the meeting will have some presentations, Laura also will forward video via email.
- Pastor Roy brought up possible change to 'permanent' flowers in the Altar vases. Possibly Silk arrangements. Make mention in bulletin and at the congregational meeting see what the feedback is.
- There is renewed interest in intra-church fellowship events – we will likely be seeking committee members. Events to help bring churches together, possible dates: September, December, Valentine event.
- Filey's has an extra ¼ acre of garden space available to plant food to go to New Hope.

**Adjournment** with Lord's Prayer, Tammy 1<sup>st</sup>, Carl 2<sup>nd</sup>.

**Attendance:**

- Chris Cressler
- Laurie Hoover
- Jeff Kreider
- Laura Malinoski
- MaryJo Rodriguez
- Lori Ross
- Carl Shearer
- Tammy Wagner

Respectfully Submitted,  
*Chris Cressler,*  
Council Secretary

**Called to order** with prayer by Pastor Roy



**St. John's Franklin Council Meeting Minutes - August 10, 2015**

Secretary's Report:

Financial Report: } Approved by motion

Pastor's Report:

Gayle made a motion that we have the Vicar for an additional Sunday and Clarence 2<sup>nd</sup> it. Motion carried. No other motions were made.

Respectfully Submitted,  
*Nancy Bobb,* Secretary

**Attendance:**

- Clarence/Sandy Bachert
- Marlene Stiffler
- Gayle Kolivras
- Pastor Roy



**Emmanuel's Council Meeting Minutes - August 11, 2015**

**Approval of:**

- Secretary's Report – 1st by Stephanie Graham, 2nd by Ron Henry
- Financial Report – 1st by Helen Kilgore, 2nd by Sonny Erford
- Pastor's Report – 1st by Ron Henry, 2nd by Stephanie Graham

**Old Business:**

- Movie on August 7, 2015 (God is not Dead). There were a total of 16 that attended; most were kids from Franklinton.
- Millers Roofing came and sealed the Bell tower and fixed the soffit. The bill has been paid.
- The letter from Met-Ed wants the church to renew their tax exempt status with them every year. Jack is sending them the information.
- The congregational meeting that was held in June approved the AiM call for Vicar Micki.

- Ron received a nice Thank you from Zach Zinn.

**New Business:**

- Pastor Roy would like Emmanuel to meet at Saint Michaels on October 4th for worship, but Ron feels it would not be well attended by Emmanuel.
- Next council meeting to be September 8, 2015.
- Helen Kilgore made a motion to adjourn the meeting, Ron Henry 2nd.

Next council meeting to be September 8.

Stephanie made a motion to adjourn the meeting, 2nd by Sonny.

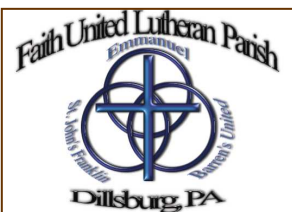
Meeting was closed with the Lord's Prayer at 7:40PM.

**Attendance:**

- Sonny Erford
- Stephanie Graham
- Ron Henry
- Helen Kilgore
- Pastor Roy
- Barb Zeigler

Respectfully Submitted,  
*Barb Zeigler*, Secretary

President Sonny Erford called the meeting to order at 7:09PM.



**FULP's Abbreviated Council Meeting Minutes - August 11, 2015**

Secretary's report, and Pastor's report were all accepted by motion.

**The Financial report:** Pastor Roy's insurance will increase by 7%. MaryJo reported that the charge for Church Windows support is \$400.00 a year. Jones charges \$594.00 a year. Intuit charges \$280.00 a year. Laura made a motion to change to Intuit for payroll and taxes. Steph 2nd and motion carried.

**The Treasurer's report:** Carl reported that \$1,625.00 was collected in July for Giant cards. June collection was \$900.00 and all churches have paid .

**Outreach Committee:** Youth Impact event was very nice. 620 families were served. Our parish donated 975 bars of soap

**New Business:**

- Dill Pickle Ad is due for \$50.00 Marlene made a motion that parish place same ad as last year. Sonny 2nd and motion carried.
- Music Boosters for Northern was given \$150.00 in name of parish.
- All churches invited to the hayride in November. We will need to know how many are attending so we can get enough tractors. This event is planned for Nov. 1 at 2:00PM.
- Vicar Micki will be commissioned on August 28, 7:00PM at Trinity Lutheran Church in Mt. Joy. She will be installed at St. John's on Oct. 25 at 3:00PM.

**Attendance:**

- Nancy Bobb
- Charles Erford
- Stephanie Graham
- Ron Henry
- Vicar Micki Kautz
- Gayle Kolivras
- Jeff Kreider
- Laura Malinoski
- Woody Myers
- MaryJo Rodriguez
- Carl Shearer
- Pastor Roy Stetler
- Marlene Stiffler

Respectfully Submitted, *Nancy Bobb*, Council Secretary

## OCTOBER

- 2 – Pearl Foreman
- 3 – Alex Beard
- 5 – Martin McCartney III
- 8 – Brenda Trump
- 9 – Cindy Fanus  
Barb Miller
- 10 – Dave Arndt  
Natalie Zeigler
- 11 – Kaelyn Balko  
Judy Miller
- 12 – Pat Miller
- 14 – Pam Fahey
- 17 – Joan Hess  
Jan Keslar  
Julia Witmer
- 18 – Kamdyn Balko  
Laurie Hoover
- 20 – Brian Fahey
- 21 – Rena Crisamore
- 23 – Luis Rodriguez  
Jenny Stine  
Barb Zeigler

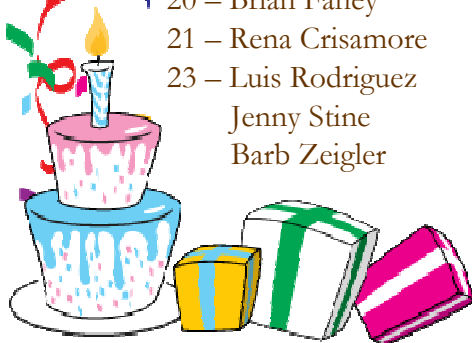
- 24 – Helen Kilgore  
Cody Weyandt
- 25 – Adam Frazier  
Curvin Klugh
- 26 – Martin McCartney IV
- 27 – Terri Tamecki
- 28 – Marcus Ross



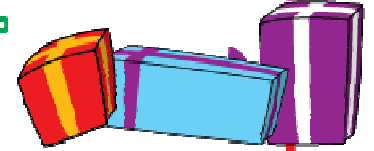
## NOVEMBER

- 1 – Jared Goulden
- 3 – Julie Williams
- 4 – David Stine
- 5 – Marianne Botta  
Bob Gochenauer
- 6 – Jane Zinn
- 9 – Devin Smith
- 10 – Doris McCauslin
- 13 – Christine Yoder
- 14 – Shirley Altland  
Gail Stetler  
Ethan Zeigler

- 15 – Marguerite Dearthoff  
Richard Stine  
Victoria Stone
- 16 – Rich Glenn  
Deb Racer
- 19 – Jacob Stine
- 20 – Blaine Myers
- 21 – Gordon Gochenauer
- 23 – Andy Swivel
- 24 – Betty Albert
- 25 – Michael Hertweck
- 29 – Kay Fest



Happy Birthday!



### SHAWL MINISTRY



To those who participate in the prayer shawl ministry, we currently have a number of "prayer shawls" to be given to the homebound and ill...thank you so much. Please consider making lap robes now... 45x36 should work well. Thank you for participating in this prayerful and compassionate ministry.

### GIANT GIFT CARDS



Giant Gift Cards are here. All three churches have a supply ready for purchase. They can be used in any of their locations to purchase everything from party platters, groceries, to gasoline. They make the perfect thoughtful gift for college students, business associates, friends, or relatives, both near and far.

See:

- Woody Myers at [Barren's](#)
- Ron Henry at [Emmanuel](#)
- Nancy Bobb at [St. John's](#)

### MEAL MINISTRY



Please contact Pastor Roy or **Laura Malinoski** if you, or someone else you know within our parish, may be in need of meals for any kind of reason. Please don't be afraid to ask for help for yourself or anyone else – it's why this program was started.



## OCTOBER PARISH WORSHIP LEADERSHIP

| Date    | Barren's                           | Emmanuel                           | St. John's Franklin |
|---------|------------------------------------|------------------------------------|---------------------|
| Oct. 4  | Pam Arndt                          | Pam Arndt                          | Elaine McCracken    |
| Oct. 11 | Pastor Roy Stetler                 | Pastor Roy Stetler                 | Vicar Micki Kautz   |
| Oct. 18 | <b>Parish Worship @ St. John's</b> | <b>Parish Worship @ St. John's</b> | Pastor Roy Stetler  |
| Oct. 25 | Pastor Roy Stetler                 | Pastor Roy Stetler                 | Elaine McCracken    |

### Lector

| Date    | Barren's                           | Emmanuel                           | St. John's Franklin |
|---------|------------------------------------|------------------------------------|---------------------|
| Oct. 4  | Wade Kreider                       | Kevin Zinn                         | Gayle Kolivras      |
| Oct. 11 | Linda Gochenauer                   | Sean Zinn                          | Gayle Kolivras      |
| Oct. 18 | <b>Parish Worship @ St. John's</b> | <b>Parish Worship @ St. John's</b> | Larry Klase         |
| Oct. 25 | Mary Lutz                          | Marianne Botta                     | Gayle Kolivras      |

### Acolyte/(Crucifer at Barren's)

| Date    | Barren's                           | Emmanuel                           | St. John's Franklin |
|---------|------------------------------------|------------------------------------|---------------------|
| Oct. 4  | Logan Racer/Gage Mummert           | TBD                                | N/A                 |
| Oct. 11 | Wade Kreider/Zoe Kreider           | TBD                                | N/A                 |
| Oct. 18 | <b>Parish Worship @ St. John's</b> | <b>Parish Worship @ St. John's</b> | N/A                 |
| Oct. 25 | TBD/TBD                            | TBD                                | N/A                 |

### Greeters/Ushers

| Date    | Barren's                           | Emmanuel                           | St. John's Franklin |
|---------|------------------------------------|------------------------------------|---------------------|
| Oct. 4  | Lawrence & Pam Shook               | Stephanie & Randy Graham           | Nancy Bobb          |
| Oct. 11 | Barb Siegel & Alison Zeigler       | Stephanie & Randy Graham           | Nancy Bobb          |
| Oct. 18 | <b>Parish Worship @ St. John's</b> | <b>Parish Worship @ St. John's</b> | Nancy Bobb          |
| Oct. 25 | Greg & Julie William Family        | Stephanie & Randy Graham           | Nancy Bobb          |

### Altar Guild

| Date            | Barren's                           | Emmanuel                           | St. John's Franklin |
|-----------------|------------------------------------|------------------------------------|---------------------|
| Oct. 4 (Green)  | Bob & Linda Gochenauer             | Pearl & Wally Foreman              | Nancy Bobb          |
| Oct. 11 (Green) | Tammy & RaeAnne Mummert            | Pearl & Wally Foreman              | Nancy Bobb          |
| Oct. 18 (Green) | <b>Parish Worship @ St. John's</b> | <b>Parish Worship @ St. John's</b> | Nancy Bobb          |
| Oct. 25 (Red)   | Tammy & RaeAnne Mummert            | Pearl & Wally Foreman              | Nancy Bobb          |

### Flower Donors

| Date    | Barren's                           | Emmanuel                           | St. John's Franklin |
|---------|------------------------------------|------------------------------------|---------------------|
| Oct. 4  | Diane Dorsey                       | TBD                                | N/A                 |
| Oct. 11 | Laura Malinoski                    | TBD                                | Nancy Bobb          |
| Oct. 18 | <b>Parish Worship @ St. John's</b> | <b>Parish Worship @ St. John's</b> | Diane Kunde         |
| Oct. 25 | Dorothy Gerber                     | TBD                                | N/A                 |

### Nursery

| Date    | Barren's                           | Emmanuel | St. John's Franklin |
|---------|------------------------------------|----------|---------------------|
| Oct. 4  | Tammy Wagner                       | N/A      | N/A                 |
| Oct. 11 | Linda Gochenauer                   | N/A      | N/A                 |
| Oct. 18 | <b>Parish Worship @ St. John's</b> | N/A      | N/A                 |
| Oct. 25 | Vicky Merovich                     | N/A      | N/A                 |



## NOVEMBER PARISH WORSHIP LEADERSHIP

| Date    | Barren's           | Emmanuel           | St. John's Franklin |
|---------|--------------------|--------------------|---------------------|
| Nov. 1  | Pastor Roy Stetler | Vicar Micki Kautz  | Elaine McCracken    |
| Nov. 8  | Pastor Roy Stetler | Pastor Roy Stetler | Vicar Micki Kautz   |
| Nov. 15 | Pastor Roy Stetler | Pastor Roy Stetler | Vicar Micki Kautz   |
| Nov. 22 | Pastor Roy Stetler | Pastor Roy Stetler | Elaine McCracken    |
| Nov. 29 | Pastor Roy Stetler | Pastor Roy Stetler | Vicar Micki Kautz   |

### Lector

| Date    | Barren's         | Emmanuel      | St. John's Franklin |
|---------|------------------|---------------|---------------------|
| Nov. 1  | Laurie Hoover    | Sonny Erford  | Nancy Bobb          |
| Nov. 8  | Woody Myers      | Deb Fager     | Nancy Bobb          |
| Nov. 15 | Linda Gochenauer | Wally Foreman | Nancy Bobb          |
| Nov. 22 | TBD              | Dot Heiges    | Nancy Bobb          |
| Nov. 29 | TBD              | Ron Henry     | Nancy Bobb          |

### Acolyte/(Crucifer at Barren's)

| Date    | Barren's                  | Emmanuel | St. John's Franklin |
|---------|---------------------------|----------|---------------------|
| Nov. 1  | TBD/TBD                   | TBD      | N/A                 |
| Nov. 8  | Logan Racer/Gage Mummert  | TBD      | N/A                 |
| Nov. 15 | Wade Kreider/Zoe Kreider  | TBD      | N/A                 |
| Nov. 22 | TBD/TBD                   | TBD      | N/A                 |
| Nov. 29 | Kamdyn Balko/Kaelyn Balko | TBD      | N/A                 |

### Greeters/Ushers

| Date    | Barren's                      | Emmanuel                         | St. John's Franklin      |
|---------|-------------------------------|----------------------------------|--------------------------|
| Nov. 1  | Tom & Deb Wolfgang Family     | Helen Kilgore & Charlie Rinehart | Sandy & Clarence Bachert |
| Nov. 8  | Dave & Pam Arndt              | Helen Kilgore & Charlie Rinehart | Sandy & Clarence Bachert |
| Nov. 15 | John Hampton & T. Gochenauer  | Helen Kilgore & Charlie Rinehart | Sandy & Clarence Bachert |
| Nov. 22 | Chris & Heather Cressler      | Helen Kilgore & Charlie Rinehart | Sandy & Clarence Bachert |
| Nov. 29 | Melissa & Scott Zirkle Family | Helen Kilgore & Charlie Rinehart | Sandy & Clarence Bachert |

### Altar Guild

| Date             | Barren's                   | Emmanuel              | St. John's Franklin |
|------------------|----------------------------|-----------------------|---------------------|
| Nov. 1 (white)   | Tammy & RaeAnne Mummert    | Pearl & Wally Foreman | TBD                 |
| Nov. 8 (green)   | Lori Ross & Julie Williams | Pearl & Wally Foreman | TBD                 |
| Nov. 15 (green)  | Lori Ross & Julie Williams | Pearl & Wally Foreman | TBD                 |
| Nov. 22 (white)  | Kevin & Pat Hoke           | Pearl & Wally Foreman | TBD                 |
| Nov. 29 (purple) | Kevin & Pat Hoke           | Pearl & Wally Foreman | TBD                 |

### Flower Donors

| Date    | Barren's                       | Emmanuel | St. John's Franklin |
|---------|--------------------------------|----------|---------------------|
| Nov. 1  | Tammy & Neil Mummert           | TBD      | N/A                 |
| Nov. 8  | Vicky Merovich                 | TBD      | N/A                 |
| Nov. 15 | Tony & Lori Ross               | TBD      | N/A                 |
| Nov. 22 | Mr. & Mrs. Kenneth Stough      | TBD      | Pam Crenshaw        |
| Nov. 29 | MaryJo & Luis Rodriguez Family | TBD      | N/A                 |

### Nursery

| Date    | Barren's       | Emmanuel | St. John's Franklin |
|---------|----------------|----------|---------------------|
| Nov. 1  | Marcy Renshaw  | N/A      | N/A                 |
| Nov. 8  | Laurie Hoover  | N/A      | N/A                 |
| Nov. 15 | Pat Hoke       | N/A      | N/A                 |
| Nov. 22 | Chris Cressler | N/A      | N/A                 |
| Nov. 29 | Judy Klugh     | N/A      | N/A                 |

# OCTOBER 2015

| Sun   | Mon                                    | Tue  | Wed   | Thu  | Fri   | Sat                                     |
|---|--|--|---|--|---|---|
|   |  |  |   | 1<br>7pm - E - Choir   | 2<br>7am - Farm<br>Women soup/bake<br>Sale<br>7:00pm - E - Movie<br>Night | 3<br>9am - E - Caring<br>Closet         |
| 4<br>9am - SM (Roy)<br>9am - E (Pam)<br>10:30am - B (Pam)<br>10:45am - SJ<br>(E. McCracken)<br>3pm - Blessing<br>Animals Svc.               | 5                                      | 6<br>1pm - Book Study<br>@ Square Bean   | 7<br>11am - Ministerium<br>7pm - Book Study<br>@ Filey's<br>7pm - B - Choir | 8<br>7pm - E - Choir   | 9   | 10                                      |
| 11<br>9am - E (Rev. Roy)<br>10:30am - B<br>(Rev. Roy)<br>10:45am - SJ<br>(Vicar Micki)<br>1pm CROP Walk<br>3pm - Rain Date<br>Animals Svc.  | 12<br><b>Columbus Day</b>              | 13<br>1pm - Book Study<br>@ Square Bean  | 14<br>7pm - Book Study<br>@ Filey's<br>7pm - B - Choir                      | 15<br>10am W. Shore<br>Ministerium<br>7pm - E - Choir                          | 16  | 17<br>9am-2pm<br>Farmer's Fair<br>Stand |
| 18<br>10:45am - SJ<br>Parish Service<br>Heritage Day<br>(Rev. Roy)  | 19<br>6:30pm - FULP<br>Budget Mtg. @ B | 20<br>1pm - Book Study<br>@ Square Bean<br>7pm - All Council<br>Meetings @ SJ<br>8pm - Parish<br>Council Meeting<br>@ SJ | 21<br>7pm - Book Study<br>@ Filey's<br>7pm - B - Choir                      | 22<br>7pm - E - Choir  | 23  | 24                                      |
| 25 <b>Reformation</b><br>9am - E (Rev. Roy)<br>10:30am - B (Roy)<br>10:45am - SJ<br>(Vicar Micki)<br>3pm - Vicar Micki<br>Installation @ SJ | 26                                     | 27<br>1pm - Book Study<br>@ Square Bean  | 28<br>7pm - Book Study<br>@ Filey's<br>7pm - B - Choir                      | 29<br>6-8pm - Trick-or-Treat Stand - Date to Be Determined.<br>7pm - E - Choir | 30  | 31 <b>Halloween</b>                     |

# NOVEMBER 2015

| Sun  | Mon  | Tue  | Wed   | Thu   | Fri                                      | Sat   |
|--|--|--|---|---|--|---|
| <p>1 <a href="#">All Saints Sunday</a></p> <p>Daylight Savings Time Ends</p> <p>9am - SM (Roy)<br/>9am - E (Vicar Micki)<br/>10:30am - B (Roy)<br/>10:45am - SJ<br/>(E. McCracken)</p> | 2  | <p>3 <a href="#">Election Day</a></p> <p>1pm - Book Study @ Square Bean</p>            | <p>4</p> <p>11am - Ministerium<br/>7pm - Book Study @ Filey's<br/>7pm - B - Choir</p> | <p>5</p> <p>7pm - E - Choir</p>                                 | <p>6</p> <p>7:00pm - E - Movie Night</p> | <p>7</p> <p>9am - E - Caring Closet</p>                             |
| <p>8 <a href="#">Harvest Home</a></p> <p>9am - E (Rev. Roy)<br/>10:30am - B (Rev. Roy)<br/>10:45am - SJ (Vicar Micki)</p>  | 9  | <p>10</p> <p>7pm - All Council Meetings @ SJ<br/>8pm - Parish Council Meeting @ SJ</p> | <p>11 <a href="#">Veteran's Day</a></p> <p>7pm - B - Choir</p>                        | <p>12</p> <p>7pm - E - Choir</p>                                | 13                                       | 14  |
| <p>15</p> <p>9am - E (Rev. Roy)<br/>10:30am - B (Rev. Roy)<br/>10:45am - SJ (Vicar Micki)</p> <p>TBD - 2pm Hayride/Chili Cookoff @ Barren's</p>  | <p>16</p> <p>Newsletter Deadline</p> <p>7pm - B - Outreach Meeting</p> | 17   | <p>18</p> <p>7pm - B - Choir</p>  | <p>19</p> <p>10am - W Shore Ministerium<br/>7pm - E - Choir</p> | 20                                       | <p>21</p> <p>8am - Men's Breakfast<br/>8am - B - Mugs-N-Muffins</p> |
| <p>22 <a href="#">Christ The King</a></p> <p>9am - E (Rev. Roy)<br/>10:30am - B (Rev. Roy)<br/>10:45am - SJ (E. McCracken)</p>   | 23   | <p>24</p> <p>7pm - Community Thanksgiving Svc. @ BIC Church</p>                        | <p>25</p> <p>7pm - B - Choir</p>  | <p>26</p> <p><a href="#">Thanksgiving Day</a></p>               | 27                                       | 28  |
| <p>29 <a href="#">1st Sun of Advent</a></p> <p>9am - E (Rev. Roy)<br/>10:30am - B (Rev. Roy)<br/>10:45am - SJ (Vicar Micki)</p>  | 30   |  |   |   |  |   |



**Faith United Lutheran Parish**

- Barren’s United
- Emmanuel
- St. John’s Franklin

Parish Mailing Address:  
232 Kralltown Road  
Dillsburg, PA 17019

Parish Phone: 717-432-4802

Parish Fax: 717-432-4802

E-Mail: [secretaryfulp@gmail.com](mailto:secretaryfulp@gmail.com)

Website: [www.faithunitedlutheran.net](http://www.faithunitedlutheran.net)

Facebook Fan Page:  
Faith United Lutheran Parish

**Our Mission Statement:** *Our mission is to be open to God’s presence in our hearts, in our minds and in our world; to love God and one another; and to proclaim our Lutheran theology of God’s love and grace for all people.*

**Pastor Roy Stetler** – Office: 717-432-4802  
Cell: 717-350-5057  
E-mail: [revstetler@gmail.com](mailto:revstetler@gmail.com)

**Deb Racer** (Newsletter Editor) - Office: 717-432-4802  
E-mail: [secretaryfulp@gmail.com](mailto:secretaryfulp@gmail.com)

**MaryJo Rodriguez** (Comptroller) - Email: [treasurefulp@gmail.com](mailto:treasurefulp@gmail.com)

**Parish Council Members:**

|                                      |                                       |
|--------------------------------------|---------------------------------------|
| President - <i>Ron Henry</i>         | Comptroller - <i>MaryJo Rodriguez</i> |
| Vice Pres. - <i>Laura Malinoski</i>  | Others: - <i>Sonny Erford</i>         |
| Secretary - <i>Nancy Bobb</i>        | - <i>Gayle Kolivras</i>               |
| Asst. Sec. - <i>Stephanie Graham</i> | - <i>Jeff Kreider</i>                 |
| Treasurer - <i>Carl Shearer</i>      | - <i>Marlene Stiffler</i>             |
| Asst Treas - <i>Woody Myers</i>      |                                       |

**Deadline for December 2015/January 2016  
Noteworthy Newsletter is Monday, November 16.**

**Faith United Lutheran Parish**

232 Kralltown Rd.  
Dillsburg, PA 17019



|                    |
|--------------------|
| Parish Member Name |
| Street Address     |
| City, ST ZIP Code  |

